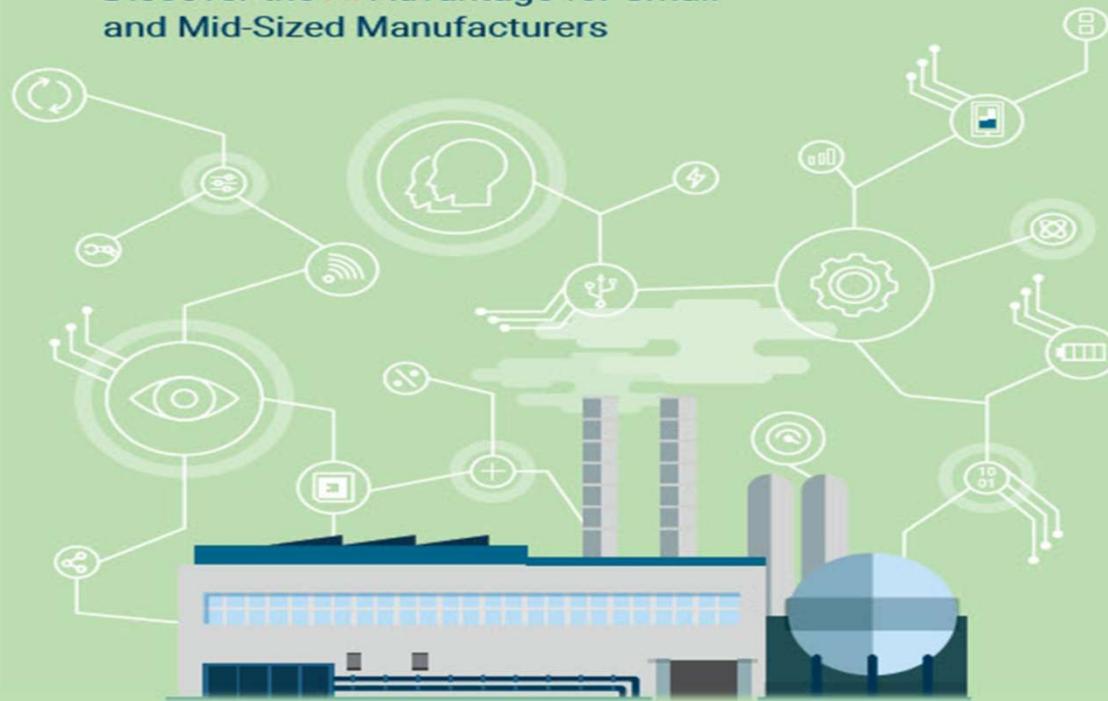


AI ISN'T JUST FOR THE BIG GUYS

Discover the AI Advantage for Small
and Mid-Sized Manufacturers



About the Company

675+ Employees

26 Nationalities

Offices in 11 Countries

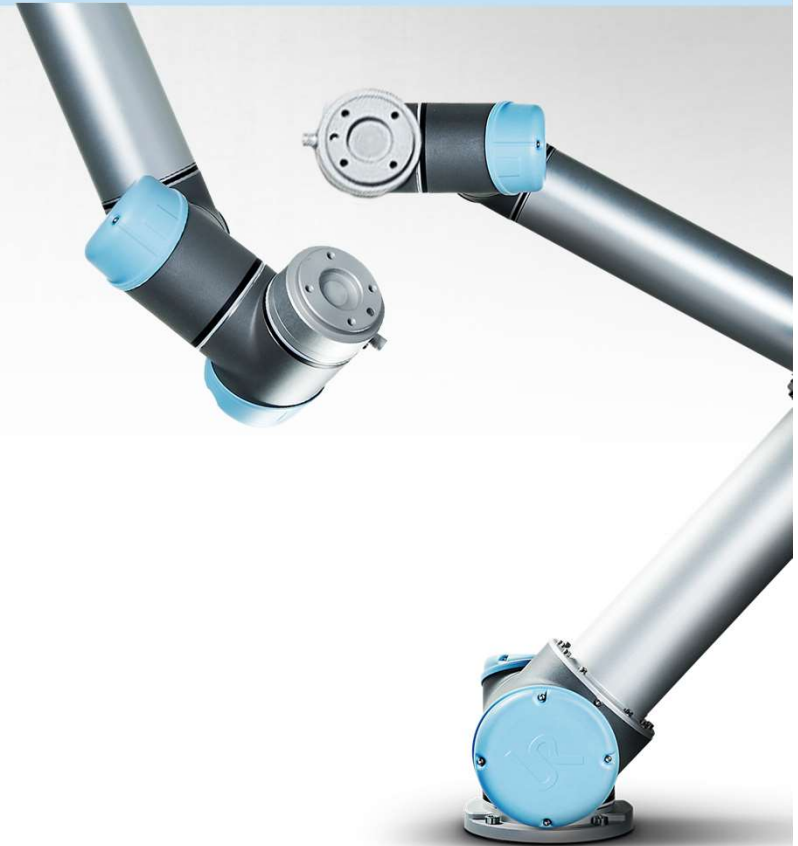
Over 380 Distributors

22 International Awards



Automation for Everybody

- UR designs and builds revolutionary collaborative robots
- Perfect for all sizes of business
- UR products are so user-friendly that anyone can operate them
- And so affordable that it is worthwhile for anyone to invest in them
- Low total cost of ownership





UNIVERSAL ROBOTS

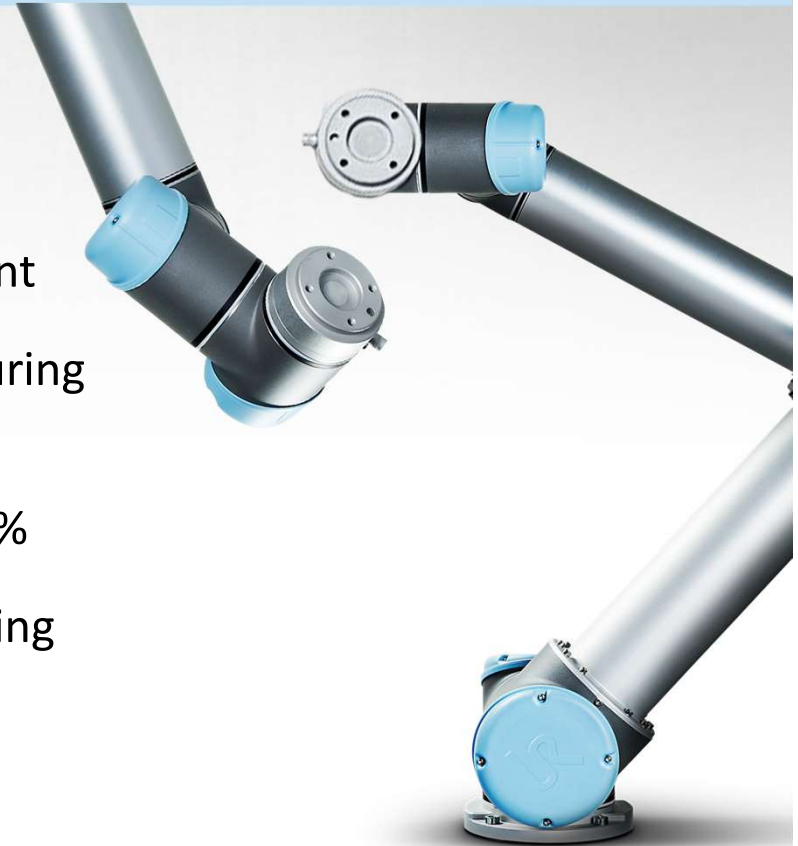
WHERE DOES AI FIT IN YOUR ORGANIZATION?

AI is already impacting a range of business functions,
many of which are accessible to SMBs



Smart Manufacturing

- AI makes manufacturing automation more affordable, more flexible, and easier to implement
- TrendForce predicts that global smart manufacturing market will increase to over \$320 billion by 2020
- Projected compound annual growth rate of 12.5%
- AI enabled collaborative robots (cobots) are driving this future flexibility in automation



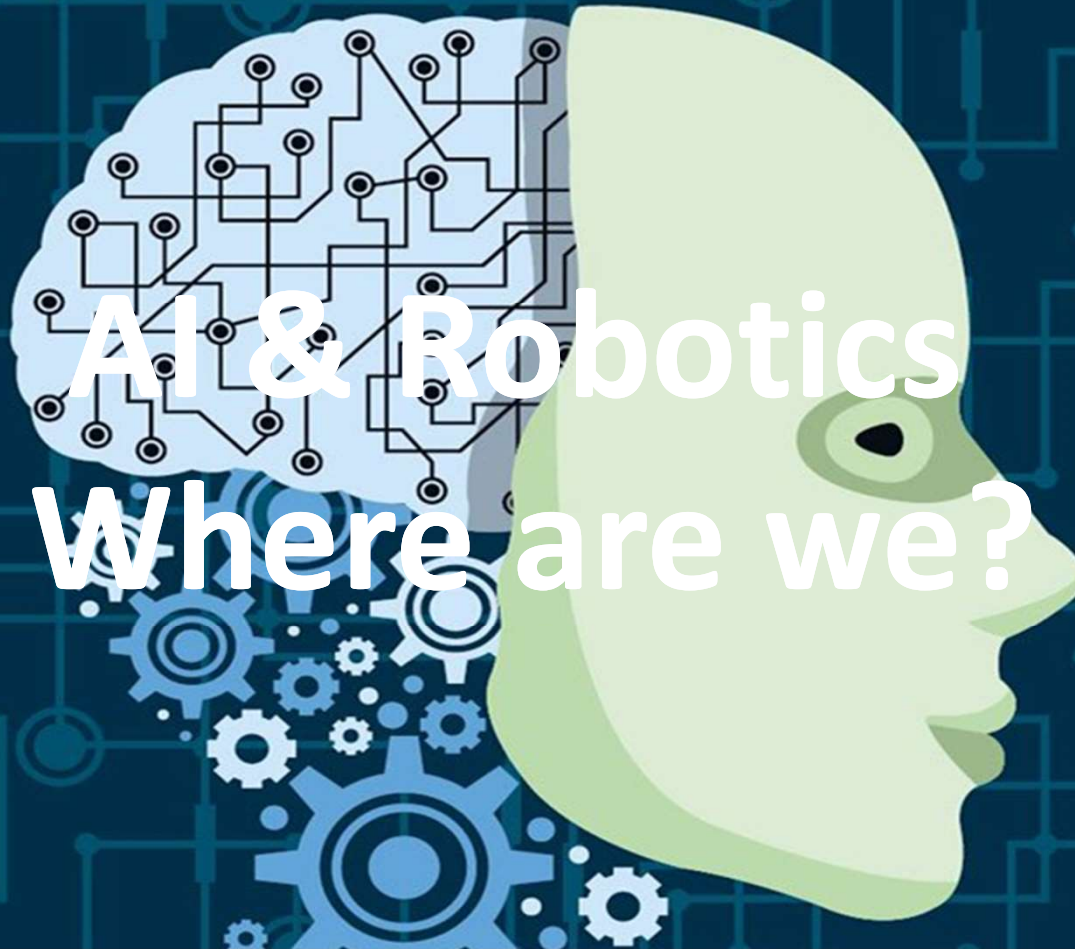
Improve, Improve, Improve

- Whatever is being done well today, can be done better tomorrow
- Remove workers from repetitive or dull tasks
- Increase employee productivity
- Ensure product quality
- Fill labour shortages
- Improve safety



UNIVERSAL ROBOTS

AI & Robotics Where are we?



UR+ Partners

Plug and Play automation for everyone

- UR+ scheme is our version of the App store
- Over 50 End-effectors
- 15 camera systems
- 21 software packages available
- Over 100 products currently on test

Cameras/Vision systems



End-effectors



Accessories



Monitor

- KPI's are essential for monitoring your robot and for guiding decisions that will maximise your ROI
- *Robotiq Insights* software provides real-time data to monitor, troubleshoot and improve production



See

- Universal Robots AI-driven cobots can recognize the presence and orientation of parts; perform inspection and dynamic pick and place tasks as well as read results from testing equipment and make decisions accordingly
- The *3D-PickIT* camera is one a growing number of AI-powered vision solutions, enabling cobots to pick up randomly oriented parts of all shapes and sizes.



Adapt

- Universal Robots AI-driven cobots can adjust task orientation as machines move; adjust the force control required to pick parts from a stack; detect and evade collisions and respond to errors with retry strategies
- *Energid's Actin SDK* Software provides real-time adaptive robot control, simulation, and path planning



Learn

- Universal Robots AI-driven cobot can predict and diagnose failure conditions; identify patterns in ongoing operations and apply insights gained to drive better performance
- Unlike traditional factory robots, *RightPick* from *RightHand Robotics* handles thousands of different items using a machine learning backend coupled with an intelligent gripper that works in concert with the UR cobots



Deploy

- An AI-driven cobot can be put to work in hours; it is also able to re-use task information, share and communicate it with other robots and motion control systems
- Universal Robots cobots can be used to control the entire assembly line with a conveyor and different sub-stations through Modbus, Ethernet IP or Profinet



Extend


- AI-driven robot can control other machines; orchestrate the activities and improvements in nearby equipment
- The *Haas Integration Kit* from *VersaBuilt* enables Universal Robots to easily execute any machining program stored on Haas CNC whilst maintaining all Haas safety interlock features



V E R S A **B U I L T**
R O B O T I C S



UNIVERSAL ROBOTS



Human-robot
collaboration
is 85% more
productive

than humans or robots alone

Source: MIT research data on Financial Times article "Meet the cobots: humans and robots together on the factory floor" on 5th May 2016

 UNIVERSAL ROBOTS

Automation for all sizes of business, in any industry

Plastic & Polymers

LEGO

TRELLEBORG

GLIDEWELL
LABORATORIES

Clamcleat®
Rope cleats

SHAD

Electronics & Technology

BOSCH

LG

Scott Fetzer

Whippany Actuation Systems

Metal & Machining

bj-gear

Paradigm

oticon

BETACOM

Pharma & Chemistry

REGION
Gentofte
Hospital

aurolab

MARKA

Replac-BM

Food & Agriculture

Orkla

ATRIA

Nortura

Nordic Sugar
Member of Nordzucker Group

mg

Scientific & Research

AGH

iQLANDIA

RAMTEC

minitube

Automotive & Contractors

BMW

Diamond

VW

BÖCO

THIELE

LEAR
CORPORATION

BAJAJ

Continental®

Furniture & Equipment

FRANKE

ETALEX

RUPES

ETC

Universal Robots

