



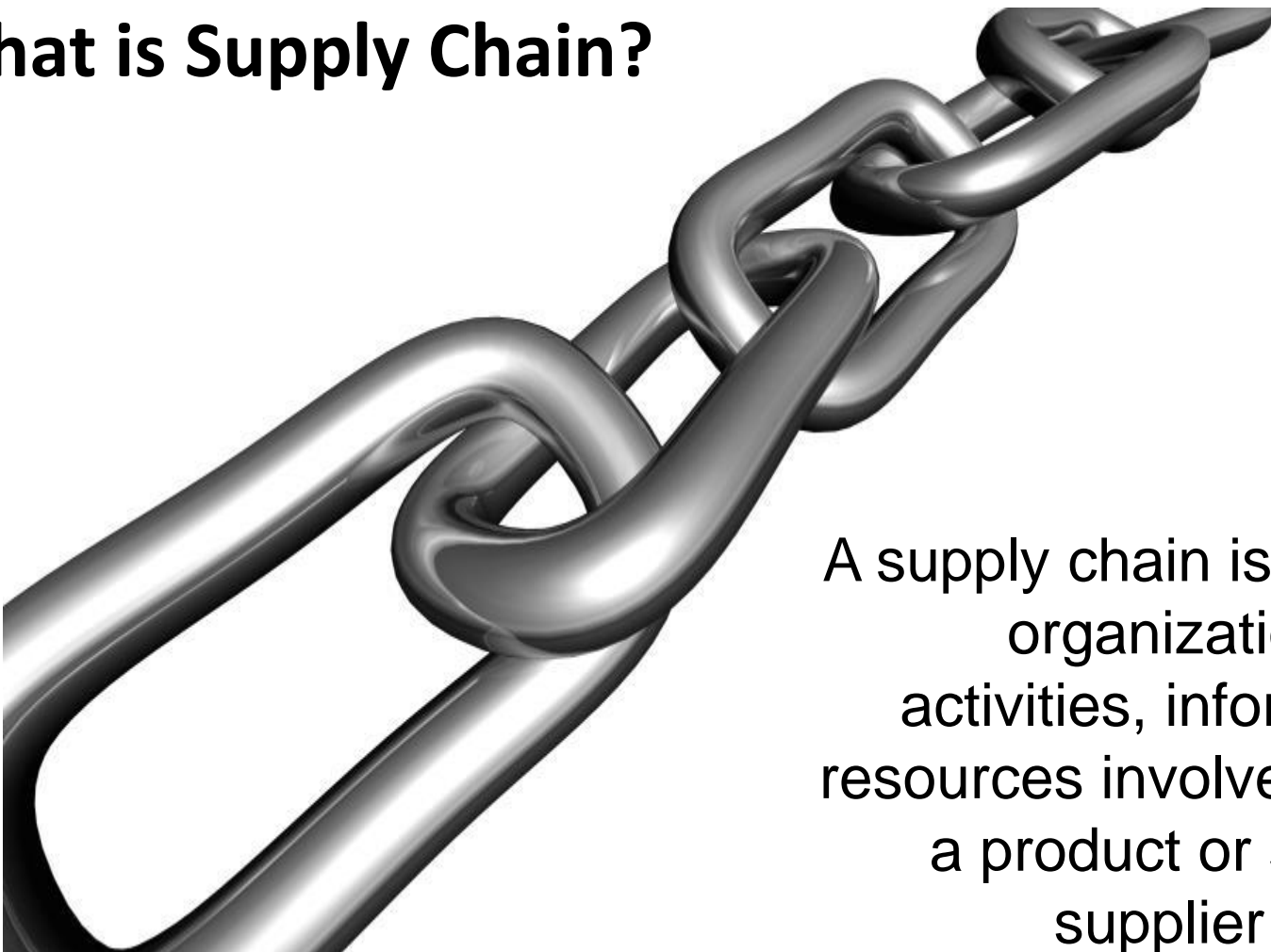
Cloud Collaborative Manufacturing Networks (SMECluster Event 4, 16th Nov. 2017, Bridgend)

Jorge Rodríguez Edroso
Head of Manufacturing & Retail Sector
Atos Spain
@jredroso



Supply Chain

What is Supply Chain?

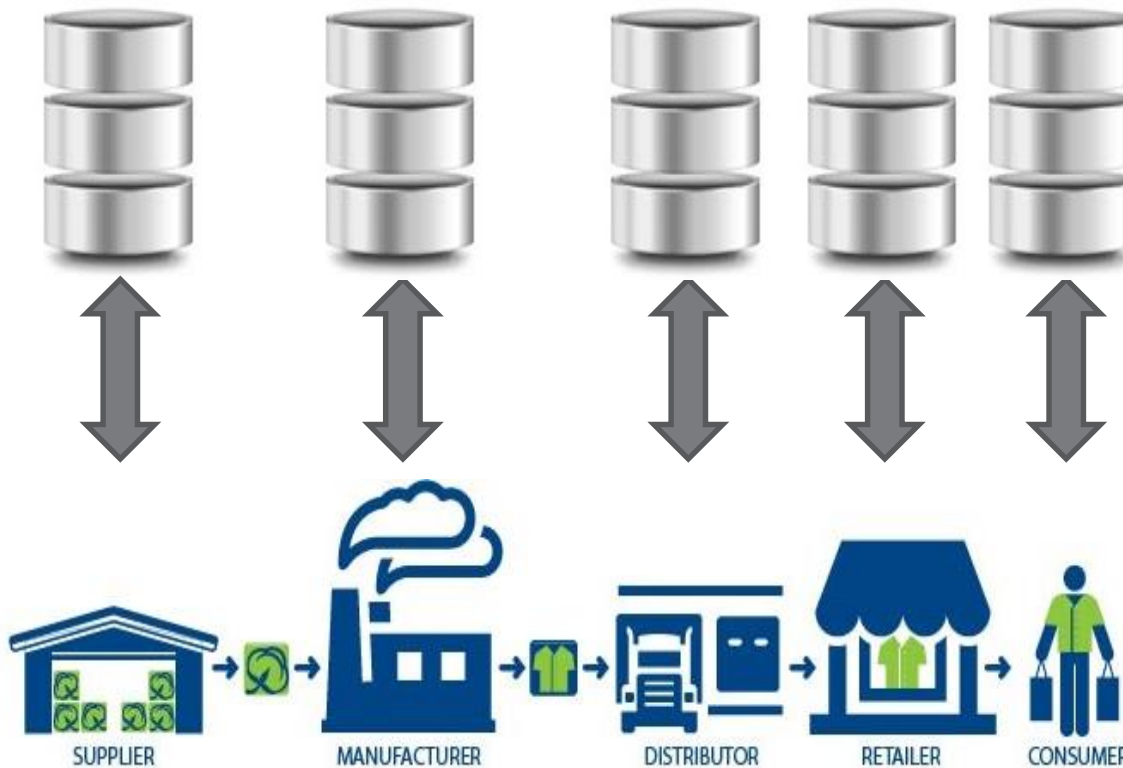


A supply chain is a system of organizations, people, activities, information, and resources involved in moving a product or service from supplier to customer



Traditional Supply Chain Model

Traditional Supply Chain Model



- × Information is stored in silos
- × Bilateral communication
- × No collaboration among stakeholders

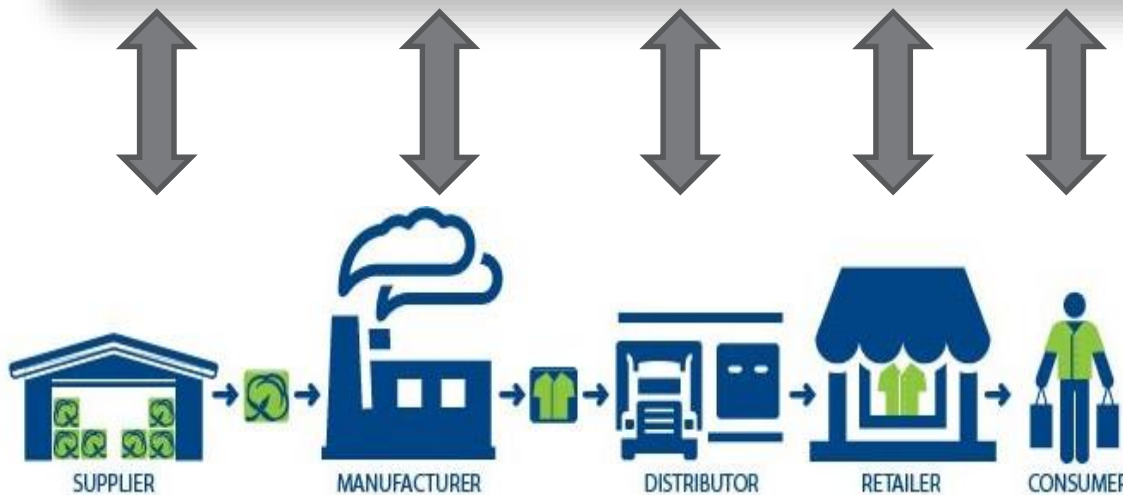


Smart Supply Chain Model

Smart Supply Chain Model

Smart APPs

IoT/Cloud Platform



- ✓ Context information (IoT, Legacy, ...).
- ✓ Information shared
- ✓ Collaboration is fostered
- ✓ Improvement in productivity
- ✓ Optimisation of the end-to-end supply chain processes
- ✓ Cost savings



Collaborative Manufacturing Networks

An example of **Smart Supply Chain** model are the **Collaborative Manufacturing Networks**:

- Connect different Manufacturing companies/plants in the supply chain.
- Using the cloud & collaboration tools
- To optimize the supply chain processes and manufacturing/Logistics assets.



The C2NET project



**H2020-FoF-1-2014
Process Optimisation
of Manuf. Assets**



**3 Years
Starting on 01/01/2015**



7.126.498 €



**19 Partners
From 6 Countries**



The C2NET consortium

Atos





The C2NET cloud

The goal of **C2NET Project** is the creation of **cloud-enabled tools** for supporting the **SMEs supply network optimization** of manufacturing and logistic assets based on collaborative demand, production and delivery plans

Cloud Platform

Cloud infrastructure with intuitive UIs that display in real-time the right data at the right time

Data Collection Framework

Legacy and IoT-based continuous data collection from supply network resources data analytics



Collaboration Tools

Advanced apps enabling decision makers to collaborate across the supply network

Network Optimizer

Advanced algorithms for collaborative demand, production and delivery plans optimization



The C2NET cloud



Data Collection Framework

- scalability
- adaptation
- interoperability
- plug & play

Legacy Systems HUB

IoT HUB



Resources virtualization



Real-world resources



The C2NET cloud



Network Optimizer



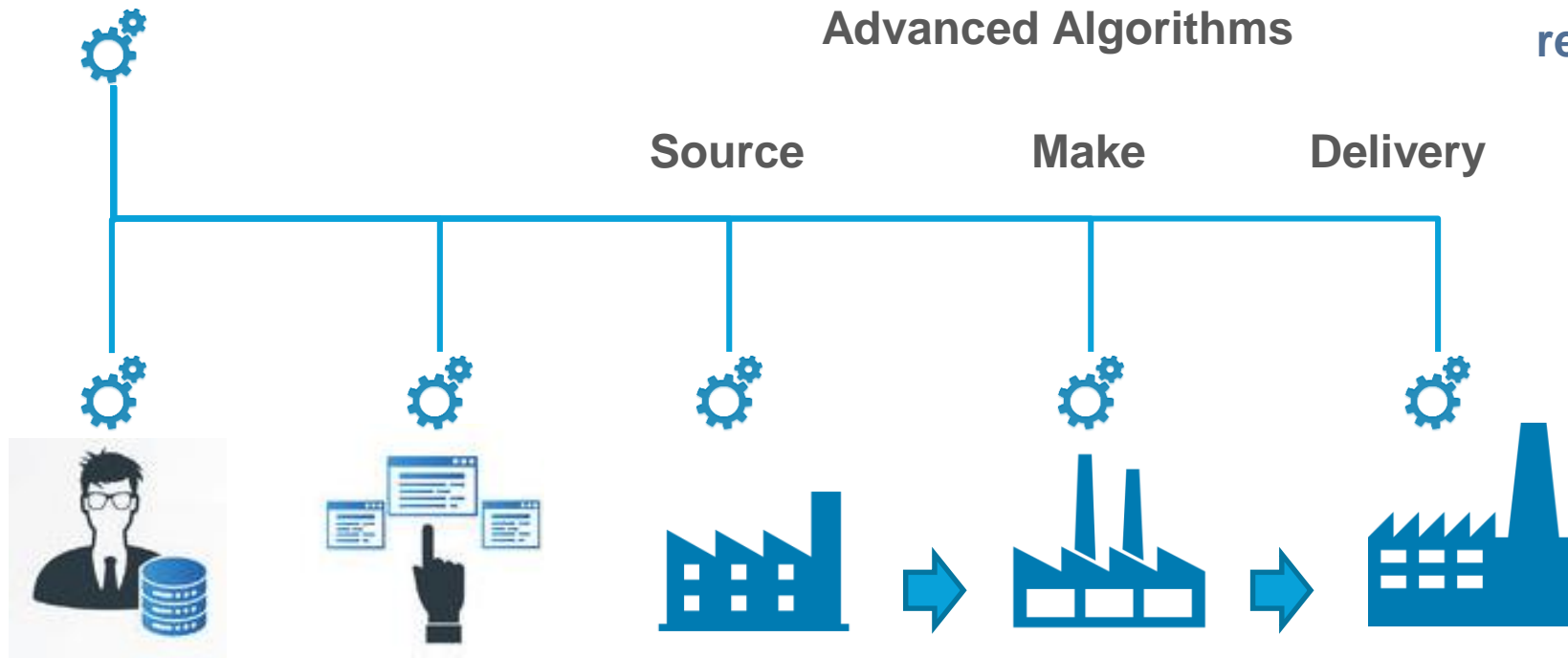
Advanced Algorithms

optimality
efficiency
holistic
real-time

Source

Make

Delivery



Planner

Plans

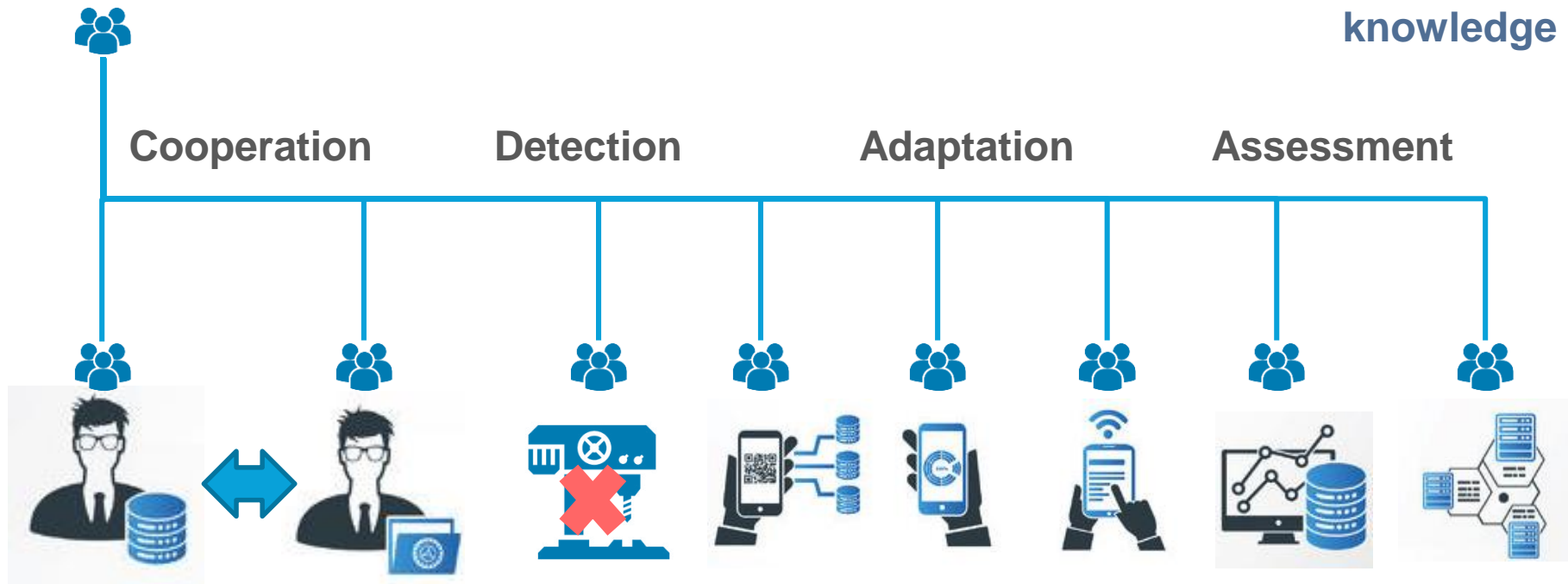


The C2NET cloud



Collaboration Tools

agility
dynamic
monitoring
knowledge





Cloud Collaborative Manufacturing Networks (SMECluster Event 4, 16th Nov. 2017, Bridgend)

Jorge Rodríguez Edroso
Head of Manufacturing & Retail Sector
Atos Spain
@jredroso